



pelican systems



fibre cement boards

JUMBO Fibre Cement Board is manufactured using an autoclave process to compress top quality cement with natural fibers. The result is an elegant, eco-friendly and extremely durable fiber cement board that provides the perfect base for diverse applications in architecture and interior design.

A non-abestos product that is resistant to moisture and impact, making it suitable for both interior and exterior applications including ceilings, partitions, as an interior lining to wet areas, cladding and many other uses.

Thickness	Length	Edge Detail	Density
4mm	2400 / 2700 / 3000mm	Square Edge	Medium
6mm	2700 / 3000mm	Square Edge	Medium
9mm	2700 / 3000mm	Square Edge	Medium

Features and Benefits

JUMBO Fibre Cement Board is resistant to moisture, impact, fire, termites and various weather conditions. It also offers excellent sound insulation. Which makes it an ideal choice for a variety of interior as well as exterior applications. With zero abestos, it ensures that your living and working spaces stay healthy and sustainable.

Fibre Cement is a non – combustible material with an index of zero for both flame spread and smoke development.

MOISTURE
RESISTANTIMPACT
RESISTANTFIRE
RESISTANTTERMITE
RESISTANTSOUND
INSULATEDNON
ASBESTOS

JUMBO Fibre Cement Board for Ceilings ... extreme resistance

JUMBO Fibre Cement Board is a strong, lightweight and long-lasting board to create classic and contemporary ceilings. Its flat and smooth surface is perfect for seamless ceiling designs and easy-to-install for grid ceiling systems.

It offers high resistance to humidity, fire and extreme weather conditions. This makes JUMBO Fibre Cement Board ideal for both indoor and outdoor ceiling applications across varied decor styles and genres.

JUMBO Fibre Cement Board for Partitions ... durable and impact resistant

High durability and resistance to impact protects the product from damage and extends application life. Superior sound insulation and resistance from moisture, termite and fire ensures hassle-free applications across residential to hospitality projects. Its dimensional stability and easy workability provides strength with convenience.

JUMBO Fibre Cement Board also gives you flexibility of a wide range of finishes so that you get functionality with aesthetics.

JUMBO Fibre Cement Board for Internal Linings ... reliable resistance

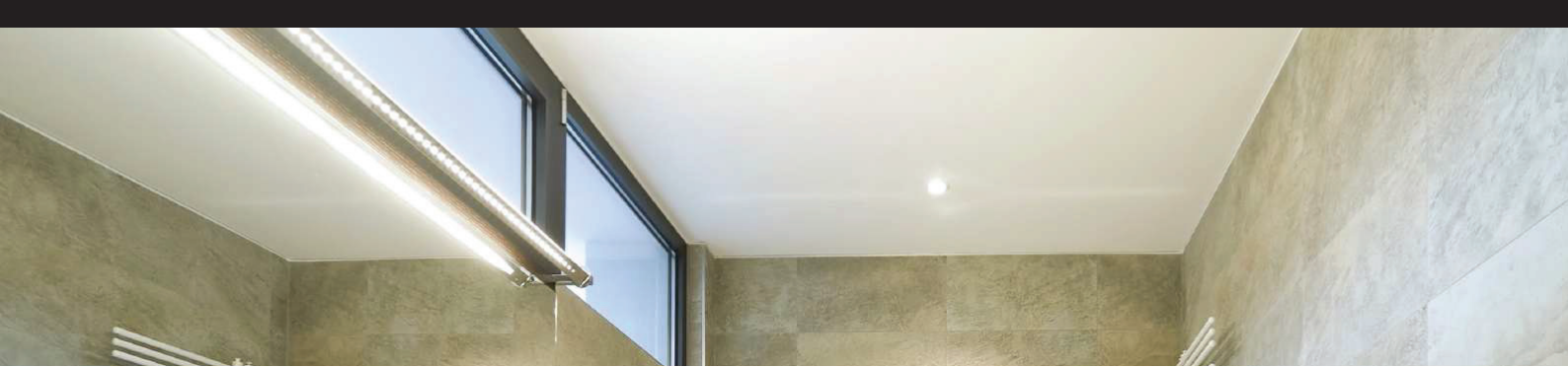
Resistant to damage from moisture impact and termites. Fire and sound insulation are added benefits.

JUMBO Fibre Cement Board for Wet Areas ... maximum water resistance

JUMBO Fibre Cement Board provides the ideal base as backing materials for wet and humid areas.

Exceptional moisture resistance assures no deterioration and growth of moulds or mildew due to dampness - thus saving you costly repairs and replacements.

Durability and impact resistance increases product longevity while good load bearing capacity offers ease of handling and installation. This makes JUMBO Fibre Cement Board perfect for bathrooms, spas, shower rooms, kitchens and other wet rooms.



Applications	4mm	6mm	9mm
Indoor Ceiling / False Ceiling	•	•	
Eave, Arch & Attic Ceiling	•	•	
Internal Partitions - Half / Full Height		•	•
Internal Lining		•	
Eaves & Soffit Lining	•	•	•
Wet Areas		•	•
Pre-fabricated Shelter - Internal / External Walls		•	•

The product has undergone multiple tests for physical, mechanical, fire resistance and durability.

Physical Properties	Unit of Measure	Fibre Cement Board	Standard Test Method
Thickness Tolerance	%	+/- 8%	ASTM C1185
Density	kg/m ³	1,300 +/- 50	ASTM C1185
Water Absorption	%	Max. 35	ASTM C1185
Moisture Resistance	%	≤15%	ASTM C1185
Mould Resistance		Pass	ASTM D3272
PH Value		7- 8	ISO 10390-2005
Water Tightness		Pass	ASTM C1185
Mechanical Properties	Unit of Measure	Fibre Cement Board	Standard Test Method
Modulus of Rupture at EMC (Avg.)	MPa	>10 (EMC)	ASTM C1185
Modulus of Elasticity on Machine Direction (EMC)	MPa	>5,000 (EMC)	ASTM C1185
Modulus of Rupture on Wet (Avg.)	MPa	>7 (Wet)	ASTM C1185
Modulus of Elasticity on Machine Direction (Wet)	MPa	>4,000 (Wet)	ASTM C1185
Fire Resistance Properties	Unit of Measure	Fibre Cement Board	Standard Test Method
Ignitibility		Pass	BS476 Part 5
Fire Propagation Index		Pass	BS476 Part 6
Surface Spread of Flame		Pass	BS476 Part 7
Smoke Development Index (SDI)		Pass	ASTM E84-00a
Flame Spread Index (FDI)		Pass	ASTM E84-00a
Durability	Unit of Measure	Fibre Cement Board	Standard Test Method
Heat / Rain Resistance		Pass	ASTM C1185
Warm Water Resistance		Pass	ASTM C1185
Freeze / Thaw Resistance		Pass	ASTM C1185
Soak / Dry Resistance		Pass	BS EN 12467:2000

ASTM – American Standard | ISO – International Standards | BS – EN – British Standard – European Norms

Manufacturer's Certification

ISO14001 for Environmental Management from ISO Standard AJA EQS of the United Kingdom.

ISO9001:2008 for Quality Management from the International Standard Institute for Head Office, Manufacturing Plants and Distribution Channels.